



Putting the

«Great Cities, Great Lakes, Great Basin»

exhibit together.



February 20th, 2015.

Instructions to assemble the exhibit.



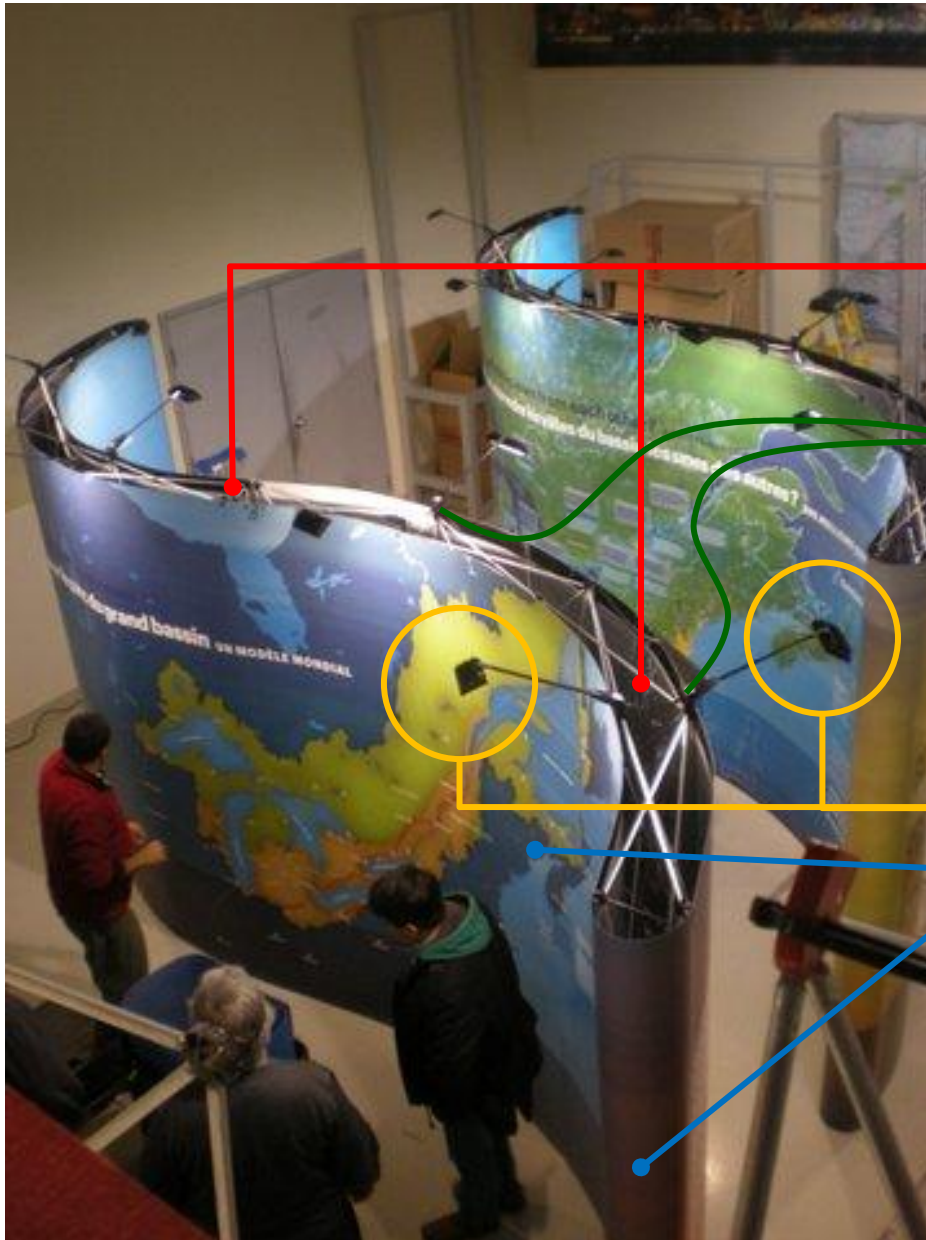
Double-sided panel 1



Double-sided panel 2

Double-sided Tower

The exhibit is composed by 2–double-sided panels and 1-double-sided tower.



To assemble the exhibit it is important to identify the following elements:

1. Expandable internal structures (2 for each double-sided panel, and 1 for the double-sided tower)

2. Attachable columns (4 double attachable columns, and several single columns)

3. Lights and extension cords

4. Attachable vinyl panels (several)

5. Boxes(4)



The exhibit comes in four boxes, as shown above.



Each box indicates what panels they have inside

To open the boxes:



Each box has four locks like this one.



To open each lock, first lift it.



Then, turn it counter-clockwise



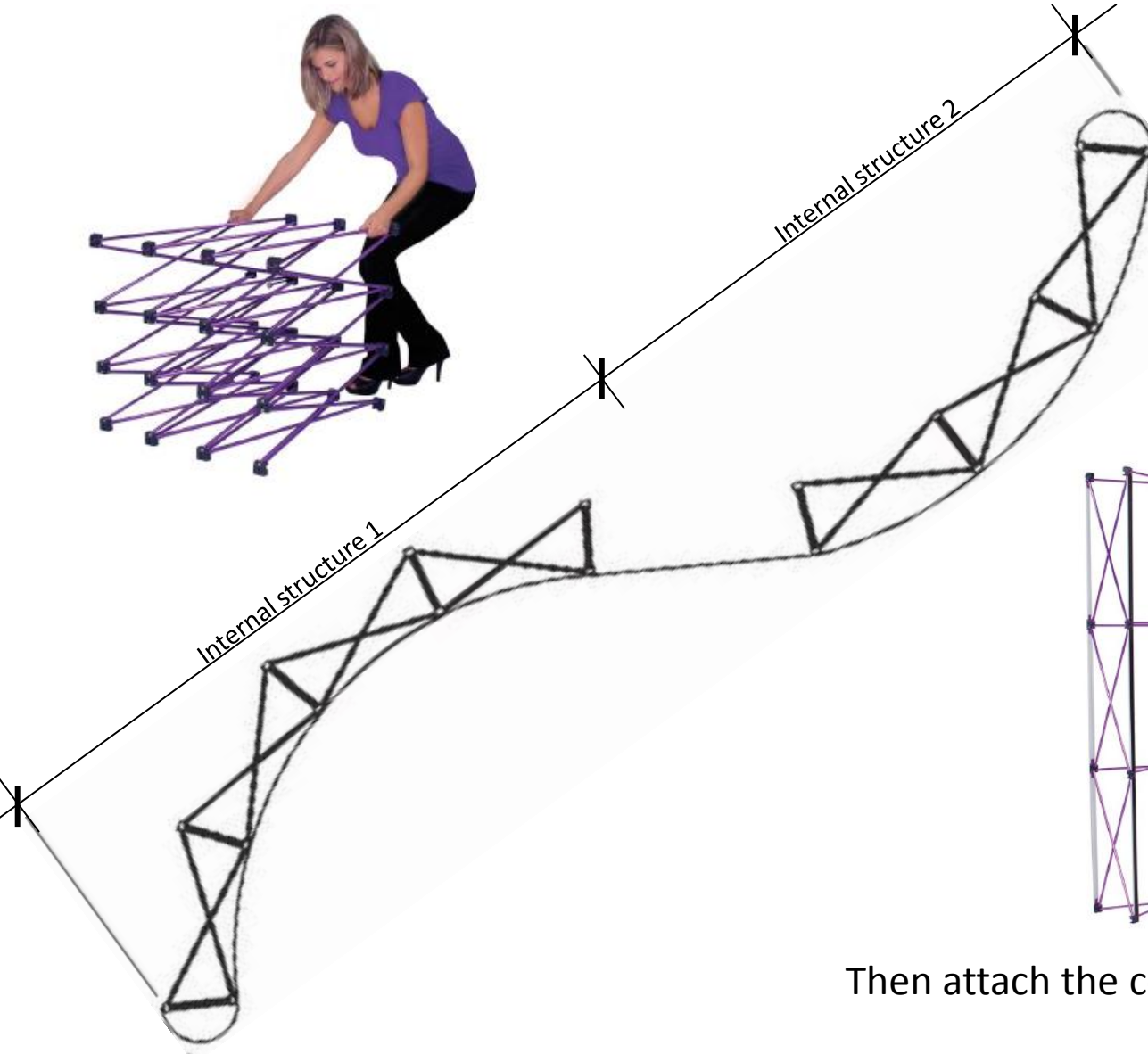
...et voilà..! The box is open..!

Once you open each box you will find (more or less) the same following elements. In this picture the box has been opened and it is seen from above.

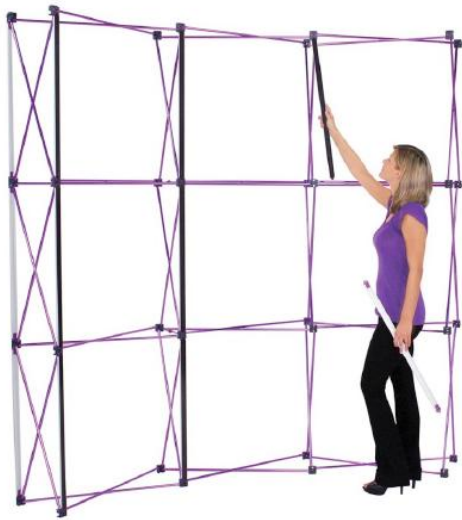


- 1. Protection layers.
- 2. Rolled vinyl panels
- 4. Lights and extension cords (Inside the box)
- 3. Attachable columns (inside the bag)
- 5. Expandable internal structure

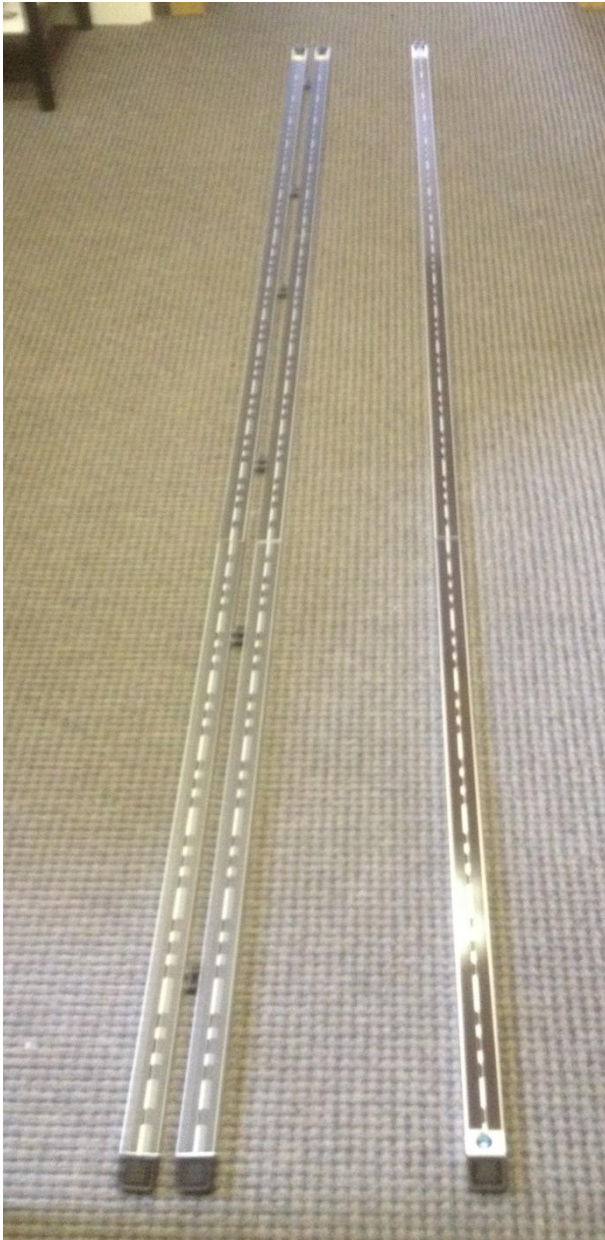
The first thing to do is to take the expandables internal structures and open them carefully.



Each double-sided panel is formed by two expandables internal structures.



Then attach the columns along the panels.

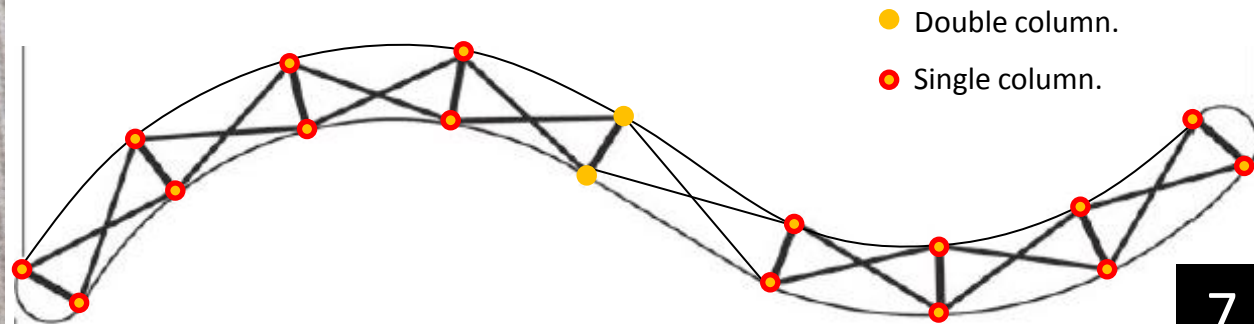


There are two kind of columns: double (4) and single (several).

The double columns have to be placed vertically on every side of the structure to put the two internal expandable structures together.

The double column has a double functionality: i) to put the structures together and ii) to attach the vinyl panel.

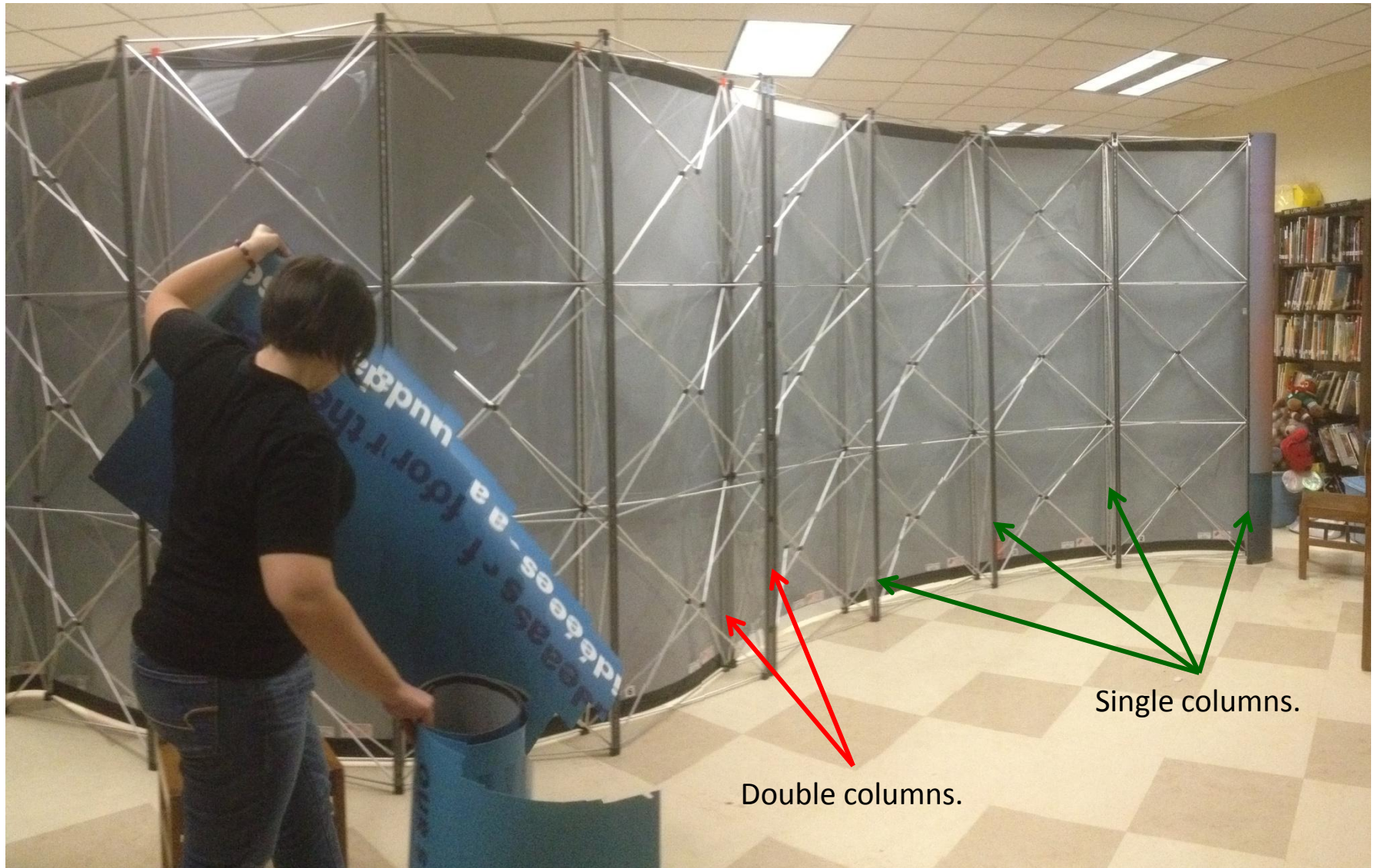
The single columns are placed vertically along the structure just to attach the vinyl panels.



This is the internal structure for the tower



This is how the internal structure of the double-sided panels look.
Observe how the double column and the single columns are placed.



The columns are assembled in this way:

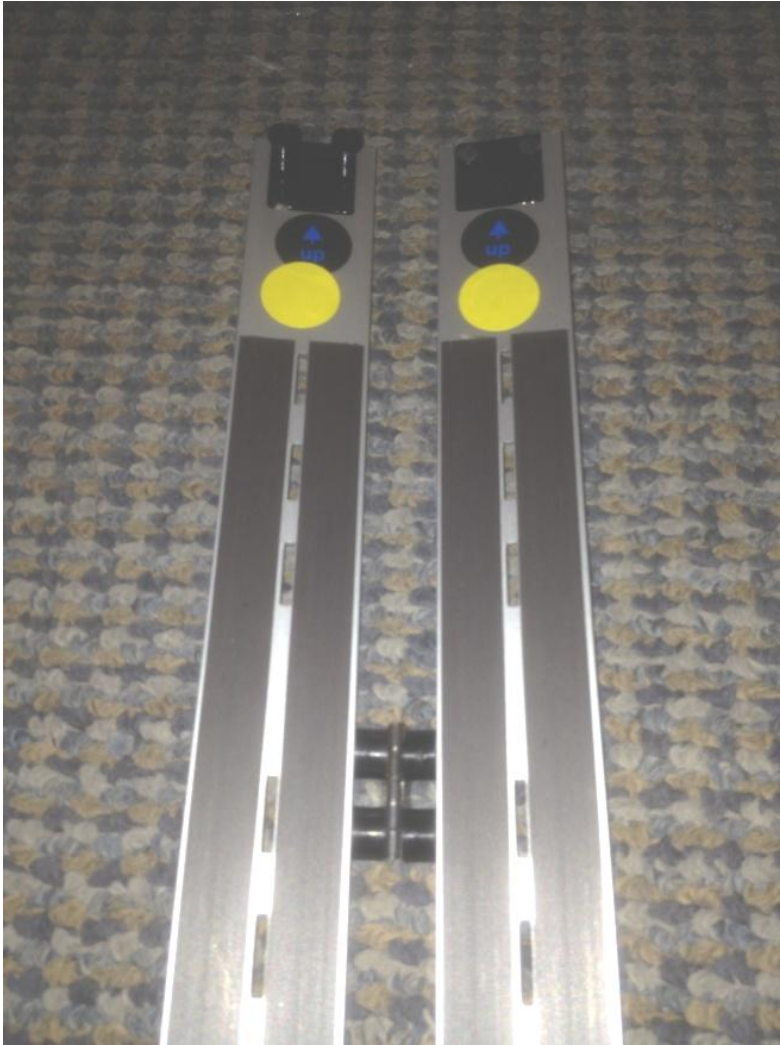


After placing the columns, place the lights on top of the columns.
There are four lights for each side double-sided panel.
You don't need the lights if the place has a very good illumination.
The tower does not have lights.



After placing the lights and branching the extension cords now you can place the panels.

Look that the double columns have a colour. It indicates that the panels that have to be attached have to have the same colour. Also look that the double columns have the pins just on one side, so if you put a different color panel, it won't fit.





Front side of the section of a panel

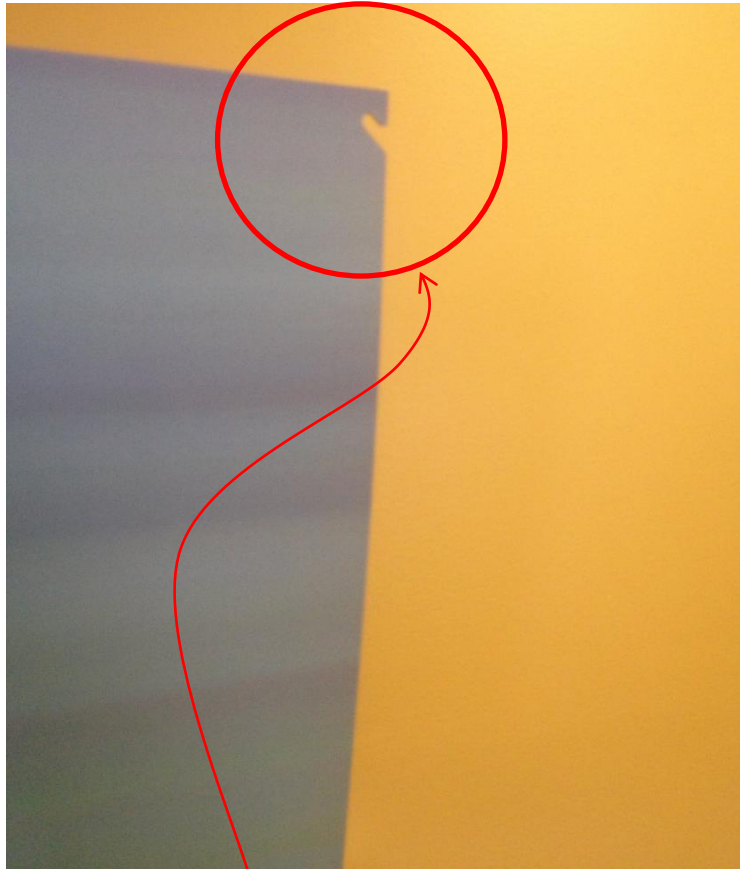


Back side of the section of the panel. Notice the magnetic stripes.



Note that every section of the panel has a number and a color behind. The sections with the number 1 go on the extremes of the double-sided panel.

Each panel has a little hole that has to be placed in every pin, then the magnetic bands have to be attached to the magnetic bands of the column.



Make it fit in every pin.



Attach the magnetic bands (placed behind each panel) in the magnetic bands of each column.

Notice that this panel goes behind this other panel.



And this panel goes behind this other panel.





If, after everything you have done, the exhibit looks more or less like this then:

Congratulations...!!! You have succeeded....!!

Now you can disassemble it and put it back in the boxes...

Carefully please...!



To put the exhibit back in the boxes:



1. First, make sure that the blue and transparent layers are attached to the inside sides of the box. They protect the exhibit when they are being transported.
2. Roll the panels one by one and attach them to the internal sides of the box. Don't roll all the panels together.
3. Place the lights and extension cords in their boxes, the structures in their bags and the columns in their bags, and then placed them inside the big plastic box.
4. Close the box carefully, so it will remain well attached.
5. Thank you!



Le Secrétariat international de l'eau
The International Secretariat for Water
El secretariado internacional del agua

Thank you...!!

